



**FIBOX – Solutions for demanding environments**



## Fibox SOLID

SOLID enclosures are an excellent choice to house electronic and electrical components. The Solid range is an ideal alternative to polyester enclosures. They are available with screw and hinge covers in both polycarbonate and ABS.



# SOLID



Optional integral hinges



Wide accessory selection



RoHS compliant and halogen-free

# SOLID PC/ABS 1919

7.4 x 7.4

PC: UL Type 1, 3, 3S, 4, 4X, 6, 6P and 12  
ABS: NEMA 1, 3, 3S, 4, 4X, 6, 6P and 12



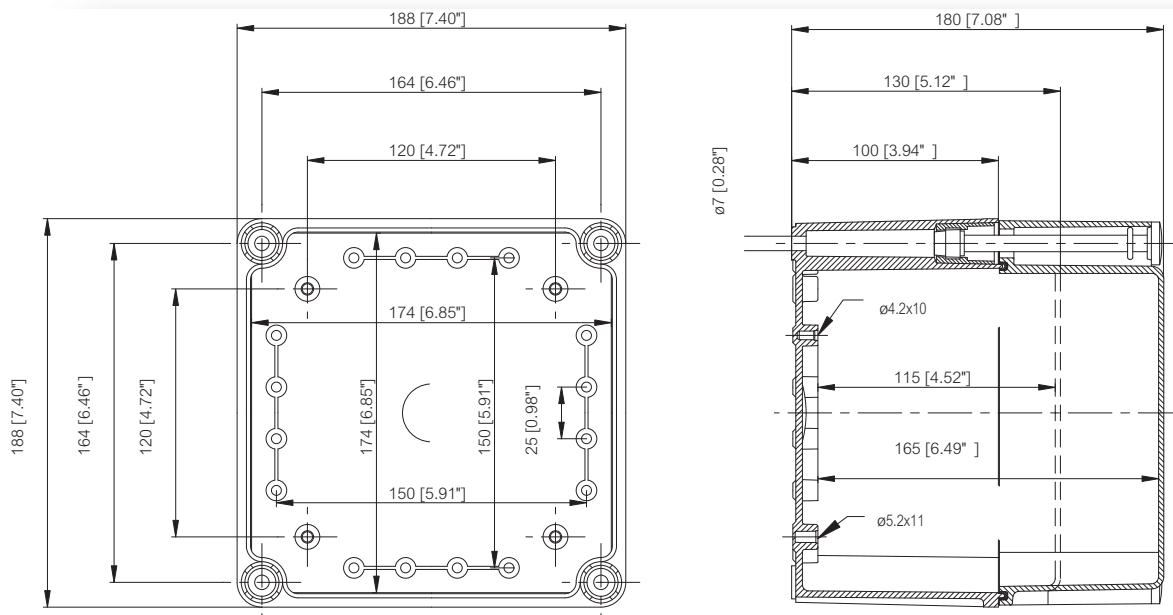
Including: Base with hardware screws for accessory mounting, cover with PUR gasket and polyamide cover screws.

## Enclosures

Order symbol	UL Order symbol	Dimensions inch	Dimensions mm	Description
PC 1919 13 G	UL PC 1919 13 G	7.4 x 7.4 x 5.1	188 x 188 x 130	Enclosure, PC ▪ Opaque cover
PC 1919 18 G	UL PC 1919 18 G	7.4 x 7.4 x 7.1	188 x 188 x 180	Enclosure, PC ▪ Opaque cover
PC 1919 13 G-2FSH	UL PC 1919 13 G-2FSH	7.4 x 7.4 x 5.1	188 x 188 x 130	Enclosure, PC, IP 65 ▪ Opaque hinged cover
PC 1919 18 G-2FSH	UL PC 1919 18 G-2FSH	7.4 x 7.4 x 7.1	188 x 188 x 180	Enclosure, PC, IP 65 ▪ Opaque hinged cover
PC 1919 13 T	UL PC 1919 13 T	7.4 x 7.4 x 5.1	188 x 188 x 130	Enclosure, PC ▪ Transparent cover
PC 1919 18 T	UL PC 1919 18 T	7.4 x 7.4 x 7.1	188 x 188 x 180	Enclosure, PC ▪ Transparent cover
PC 1919 13 T-2FSH	UL PC 1919 13 T-2FSH	7.4 x 7.4 x 5.1	188 x 188 x 130	Enclosure, PC, IP 65 ▪ Trans. hinged cover
PC 1919 18 T-2FSH	UL PC 1919 18 T-2FSH	7.4 x 7.4 x 7.1	188 x 188 x 180	Enclosure, PC, IP 65 ▪ Trans. hinged cover
ABS 1919 13 G		7.4 x 7.4 x 5.1	188 x 188 x 130	Enclosure, ABS ▪ Opaque cover
ABS 1919 18 G		7.4 x 7.4 x 7.1	188 x 188 x 180	Enclosure, ABS ▪ Opaque cover

## Accessories

Order symbol	Dimensions inch	Dimensions mm	Description
EKHVT	5.8 x 5.8	148 x 148	Back Panel
EKV 12	1.4 x 6.3	35 x 160	DIN-35 Mounting rail





# SOLID PC/ABS 2819

10.9 x 7.4

PC: UL Type 1, 3, 3S, 4, 4X, 6, 6P and 12  
ABS: NEMA 1, 3, 3S, 4, 4X, 6, 6P and 12

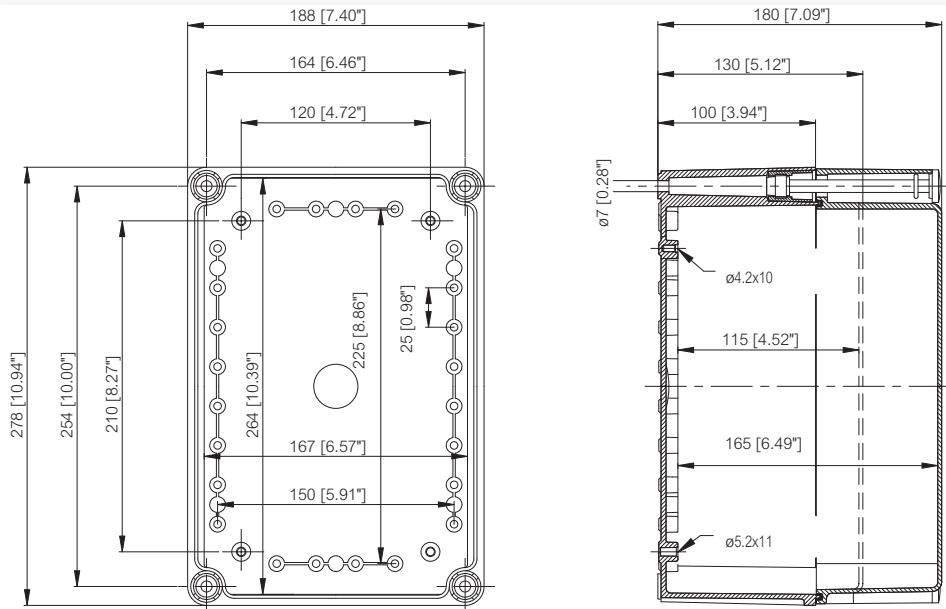
Including: Base with hardware screws for accessory mounting, cover with PUR gasket and polyamide cover screws.

## Enclosures

Order symbol	UL Order symbol	Dimensions inch	Dimensions mm	Description
PC 2819 13 G	UL PC 2819 13 G	10.9 x 7.4 x 5.1	278 x 188 x 130	Enclosure, PC • Opaque cover
PC 2819 18 G	UL PC 2819 18 G	10.9 x 7.4 x 7.1	278 x 188 x 180	Enclosure, PC • Opaque cover
PC 2819 13 G-2FSH	UL PC 2819 13 G-2FSH	10.9 x 7.4 x 5.1	278 x 188 x 130	Enclosure, PC, IP 65 • Opaque hinged cover
PC 2819 18 G-2FSH	UL PC 2819 18 G-2FSH	10.9 x 7.4 x 7.1	278 x 188 x 180	Enclosure, PC, IP 65 • Opaque hinged cover
PC 2819 13 T	UL PC 2819 13 T	10.9 x 7.4 x 5.1	278 x 188 x 130	Enclosure, PC • Transparent cover
PC 2819 18 T	UL PC 2819 18 T	10.9 x 7.4 x 7.1	278 x 188 x 180	Enclosure, PC • Transparent cover
PC 2819 13 T-2FSH	UL PC 2819 13 T-2FSH	10.9 x 7.4 x 5.1	278 x 188 x 130	Enclosure, PC, IP 65 • Trans. hinged cover
PC 2819 18 T-2FSH	UL PC 2819 18 T-2FSH	10.9 x 7.4 x 7.1	278 x 188 x 180	Enclosure, PC, IP 65 • Trans. hinged cover
ABS 2819 13 G		10.9 x 7.4 x 5.1	278 x 188 x 130	Enclosure, ABS • Opaque cover
ABS 2819 18 G		10.9 x 7.4 x 7.1	278 x 188 x 180	Enclosure, ABS • Opaque cover

## Accessories

Order symbol	Dimensions inch	Dimensions mm	Description
EKJVT	9.4 x 5.8	238 x 148	Back Panel
EKV 12	1.4 x 6.3	35 x 160	DIN-35 Mounting rail
EKV 22	1.4 x 9.3	35 x 235	DIN-35 Mounting rail
EKJZR	10.9 x 7.4 x 2	278 x 188 x 50	Extension frame



# SOLID PC/ABS 3819

14.9 x 7.4 PC: UL Type 1, 3, 3S, 4, 4X, 6, 6P and 12  
ABS: NEMA 1, 3, 3S, 4, 4X, 6, 6P and 12

Including: Base with hardware screws for accessory mounting, cover with PUR gasket and polyamide cover screws.

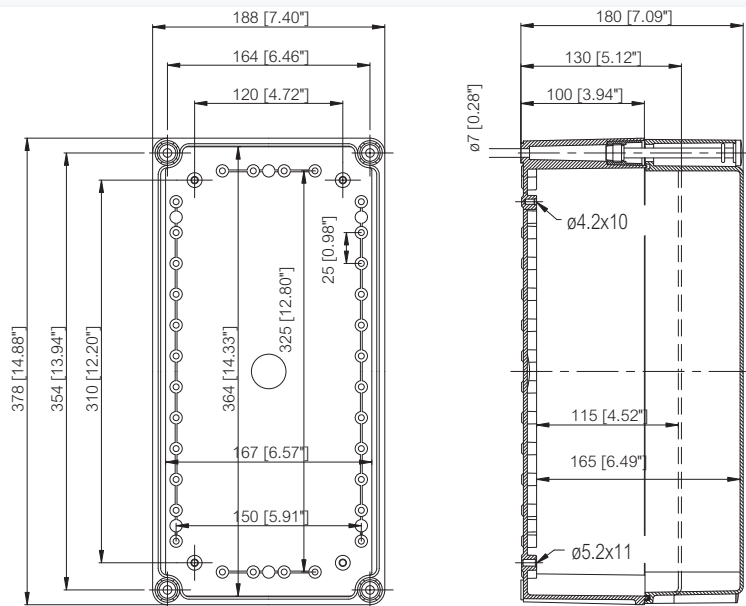


## Enclosures

Order symbol	UL Order symbol	Dimensions inch	Dimensions mm	Description
PC 3819 13 G	UL PC 3819 13 G	14.9 x 7.4 x 5.1	378 x 188 x 130	Enclosure, PC ▪ Opaque cover
PC 3819 18 G	UL PC 3819 18 G	14.9 x 7.4 x 7.1	378 x 188 x 180	Enclosure, PC ▪ Opaque cover
PC 3819 13 G-2FSH	UL PC 3819 13 G-2FSH	14.9 x 7.4 x 5.1	378 x 188 x 130	Enclosure, PC, IP 65 ▪ Opaque hinged cover
PC 3819 18 G-2FSH	UL PC 3819 18 G-2FSH	14.9 x 7.4 x 7.1	378 x 188 x 180	Enclosure, PC, IP 65 ▪ Opaque hinged cover
PC 3819 13 T	UL PC 3819 13 T	14.9 x 7.4 x 5.1	378 x 188 x 130	Enclosure, PC ▪ Transparent cover
PC 3819 18 T	UL PC 3819 18 T	14.9 x 7.4 x 7.1	378 x 188 x 180	Enclosure, PC ▪ Transparent cover
PC 3819 13 T-2FSH	UL PC 3819 13 T-2FSH	14.9 x 7.4 x 5.1	378 x 188 x 130	Enclosure, PC, IP 65 ▪ Trans. hinged cover
PC 3819 18 T-2FSH	UL PC 3819 18 T-2FSH	14.9 x 7.4 x 7.1	378 x 188 x 180	Enclosure, PC, IP 65 ▪ Trans. hinged cover
ABS 3819 13 G		14.9 x 7.4 x 5.1	378 x 188 x 130	Enclosure, ABS ▪ Opaque cover
ABS 3819 18 G		14.9 x 7.4 x 7.1	378 x 188 x 180	Enclosure, ABS ▪ Opaque cover

## Accessories

Order symbol	Dimensions inch	Dimensions mm	Description
EKMVT	13.3 x 5.8	338 x 148	Back Panel
EKV 12	1.4 x 6.3	35 x 160	DIN-35 Mounting rail
EKV 32	1.4 x 13.2	35 x 335	DIN-35 Mounting rail
EKMZR	14.9 x 7.4 x 2	378 x 188 x 50	Extension frame





# SOLID PC/ABS 2828

10.9 x 10.9 PC: UL Type 1, 3, 3S, 4, 4X, 6, 6P and 12  
ABS: NEMA 1, 3, 3S, 4, 4X, 6, 6P and 12

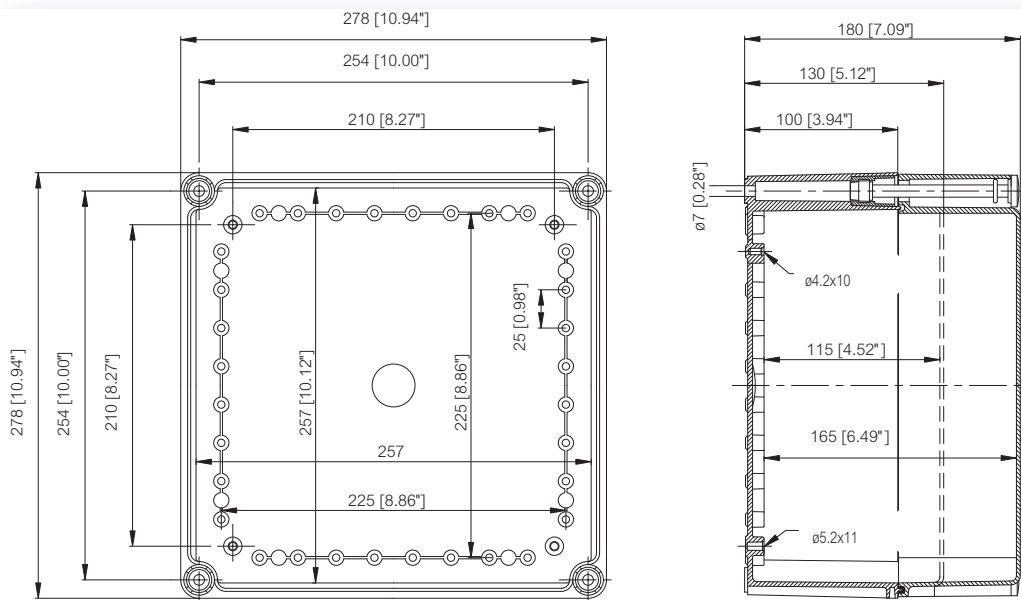
Including: Base with hardware screws for accessory mounting, cover with PUR gasket and polyamide cover screws.

## Enclosures

Order symbol	UL Order symbol	Dimensions inch	Dimensions mm	Description
PC 2828 13 G	UL PC 2828 13 G	10.9 x 10.9 x 5.1	278 x 278 x 130	Enclosure, PC • Opaque cover
PC 2828 18 G	UL PC 2828 18 G	10.9 x 10.9 x 7.1	278 x 278 x 180	Enclosure, PC • Opaque cover
PC 2828 13 G-2FSH	UL PC 2828 13 G-2FSH	10.9 x 10.9 x 5.1	278 x 278 x 130	Enclosure, PC, IP 65 • Opaque hinged cover
PC 2828 18 G-2FSH	UL PC 2828 18 G-2FSH	10.9 x 10.9 x 7.1	278 x 278 x 180	Enclosure, PC, IP 65 • Opaque hinged cover
PC 2828 13 T	UL PC 2828 13 T	10.9 x 10.9 x 5.1	278 x 278 x 130	Enclosure, PC • Transparent cover
PC 2828 18 T	UL PC 2828 18 T	10.9 x 10.9 x 7.1	278 x 278 x 180	Enclosure, PC • Transparent cover
PC 2828 13 T-2FSH	UL PC 2828 13 T-2FSH	10.9 x 10.9 x 5.1	278 x 278 x 130	Enclosure, PC, IP 65 • Trans. hinged cover
PC 2828 18 T-2FSH	UL PC 2828 18 T-2FSH	10.9 x 10.9 x 7.1	278 x 278 x 180	Enclosure, PC, IP 65 • Trans. hinged cover
ABS 2828 13 G		10.9 x 10.9 x 5.1	278 x 278 x 130	Enclosure, ABS • Opaque cover
ABS 2828 18 G		10.9 x 10.9 x 7.1	278 x 278 x 180	Enclosure, ABS • Opaque cover

## Accessories

Order symbol	Dimensions inch	Dimensions mm	Description
EKOVT	9.4 x 9.4	238 x 238	Back Panel
EKV 22	1.4 x 9.3	35 x 235	DIN-35 Mounting rail
EKOZR	10.9 x 10.9 x 2	278 x 278 x 50	Extension frame



# SOLID PC/ABS 3828

14.9 x 10.9 PC: UL Type 1, 3, 3S, 4, 4X, 6, 6P and 12  
ABS: NEMA 1, 3, 3S, 4, 4X, 6, 6P and 12

Including: Base with hardware screws for accessory mounting, cover with PUR gasket and polyamide cover screws.

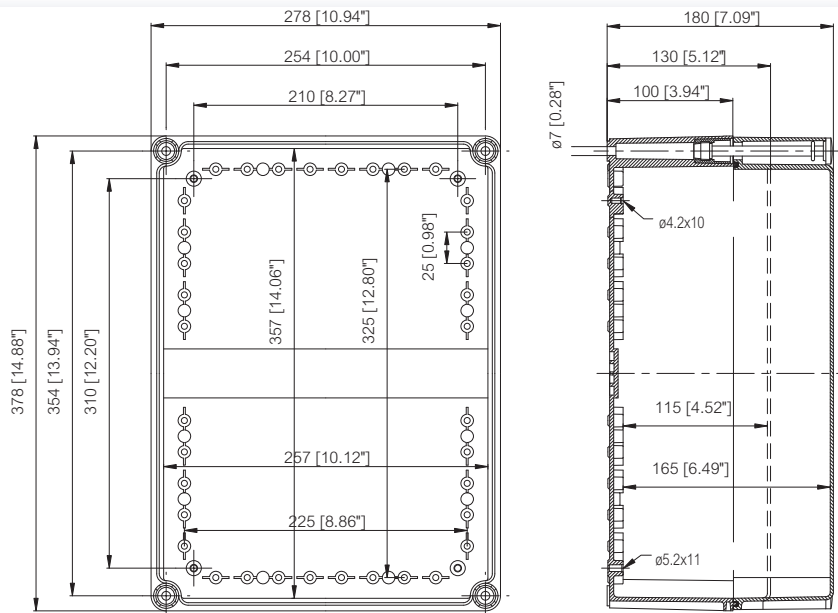


## Enclosures

Order symbol	UL Order symbol	Dimensions inch	Dimensions mm	Description
PC 3828 13 G	UL PC 3828 13 G	14.9 x 10.9 x 5.1	378 x 278 x 130	Enclosure, PC ▪ Opaque cover
PC 3828 18 G	UL PC 3828 18 G	14.9 x 10.9 x 7.1	378 x 278 x 180	Enclosure, PC ▪ Opaque cover
PC 3828 13 G-2FSH	UL PC 3828 13 G-2FSH	14.9 x 10.9 x 5.1	378 x 278 x 130	Enclosure, PC, IP 65 ▪ Opaque hinged cover
PC 3828 18 G-2FSH	UL PC 3828 18 G-2FSH	14.9 x 10.9 x 7.1	378 x 278 x 180	Enclosure, PC, IP 65 ▪ Opaque hinged cover
PC 3828 13 T	UL PC 3828 13 T	14.9 x 10.9 x 5.1	378 x 278 x 130	Enclosure, PC ▪ Transparent cover
PC 3828 18 T	UL PC 3828 18 T	14.9 x 10.9 x 7.1	378 x 278 x 180	Enclosure, PC ▪ Transparent cover
PC 3828 13 T-2FSH	UL PC 3828 13 T-2FSH	14.9 x 10.9 x 5.1	378 x 278 x 130	Enclosure, PC, IP 65 ▪ Trans. hinged cover
PC 3828 18 T-2FSH	UL PC 3828 18 T-2FSH	14.9 x 10.9 x 7.1	378 x 278 x 180	Enclosure, PC, IP 65 ▪ Trans. hinged cover
ABS 3828 13 G		14.9 x 10.9 x 5.1	378 x 278 x 130	Enclosure, ABS ▪ Opaque cover
ABS 3828 18 G		14.9 x 10.9 x 7.1	378 x 278 x 180	Enclosure, ABS ▪ Opaque cover

## Accessories

Order symbol	Dimensions inch	Dimensions mm	Description
EKPVT	13.3 x 9.4	338 x 238	Back Panel
EKV 22	1.4 x 9.3	35 x 235	DIN-35 Mounting rail
EKV 32	1.4 x 13.2	35 x 335	DIN-35 Mounting rail
EKPZR	14.9 x 10.9 x 2	378 x 278 x 50	Extension frame





# SOLID PC/ABS 5628

22.0 x 10.9 PC: UL Type 1, 3, 3S, 4, 4X, 6, 6P and 12  
ABS: NEMA 1, 3, 3S, 4, 4X, 6, 6P and 12

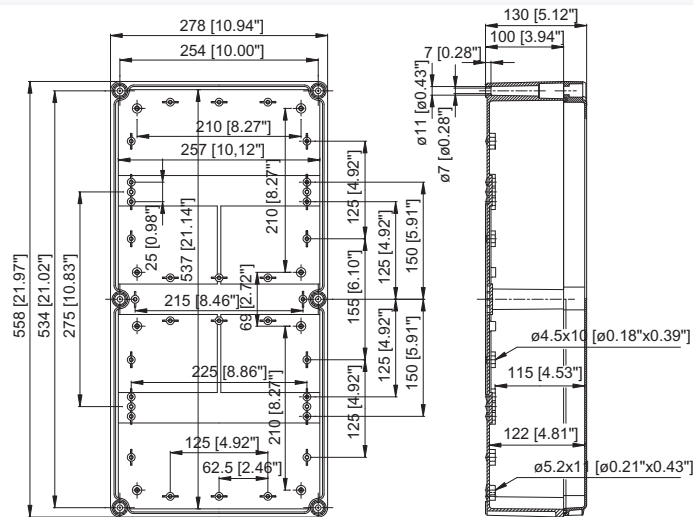
Including: Base with hardware screws for accessory mounting, cover with PUR gasket and polyamide cover screws.

## Enclosures

Order symbol	UL Order symbol	Dimensions inch	Dimensions mm	Description
PC 5628 13 G	UL PC 5628 13 G	22 x 10.9 x 5.1	558 x 278 x 130	Enclosure, PC • Opaque cover
PC 5628 13 G-3FSH	UL PC 5628 13 G-3FSH	22 x 10.9 x 5.1	558 x 278 x 130	Enclosure, PC, IP 65 • Opaque hinged cover
PC 5628 13 T	UL PC 5628 13 T	22 x 10.9 x 5.1	558 x 278 x 130	Enclosure, PC • Transparent cover
PC 5628 13 T-3FSH	UL PC 5628 13 T-3FSH	22 x 10.9 x 5.1	558 x 278 x 130	Enclosure, PC, IP 65 • Trans. hinged cover
ABS 5628 13 G		22 x 10.9 x 5.1	558 x 278 x 130	Enclosure, ABS • Opaque cover

## Accessories

Order symbol	Dimensions inch	Dimensions mm	Description
EKTVT	20.4 x 9.4	518 x 238	Back Panel
EKV 22	1.4 x 9.3	35 x 235	DIN-35 Mounting rail
EKV 50	1.4 x 19.7	35 x 500	DIN-35 Mounting rail
EKTZR	22 x 10.9 x 2	558 x 278 x 50	Extension frame





# SOLID PC/ABS 5638

22.0 x 14.9 PC: UL Type 1, 3, 3S, 4, 4X, 6, 6P and 12  
ABS: NEMA 1, 3, 3S, 4, 4X, 6, 6P and 12

Including: Base with hardware screws for accessory mounting, cover with PUR gasket and polyamide cover screws.

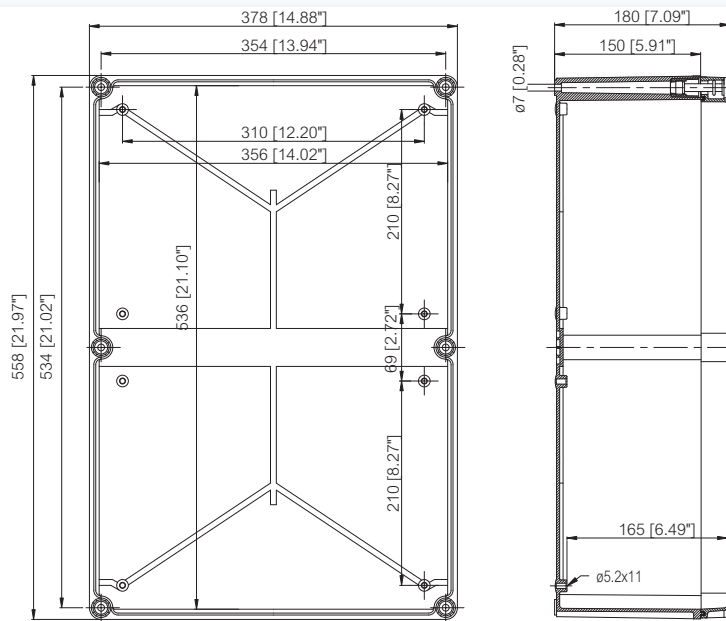


## Enclosures

Order symbol	UL Order symbol	Dimensions inch	Dimensions mm	Description
PC 5638 18 G	UL PC 5638 18 G	22 x 14.9 x 7.1	558 x 378 x 180	Enclosure, PC ▪ Opaque cover
PC 5638 18 G-3FSH	UL PC 5638 18 G-3FSH	22 x 14.9 x 7.1	558 x 378 x 180	Enclosure, PC, IP 65 ▪ Opaque hinged cover
PC 5638 18 T	UL PC 5638 18 T	22 x 14.9 x 7.1	558 x 378 x 180	Enclosure, PC ▪ Transparent cover
PC 5638 18 T-3FSH	UL PC 5638 18 T-3FSH	22 x 14.9 x 7.1	558 x 378 x 180	Enclosure, PC, IP 65 ▪ Trans. hinged cover
ABS 5638 18 G		22 x 14.9 x 7.1	558 x 378 x 180	Enclosure, ABS ▪ Opaque cover

## Accessories

Order symbol	Dimensions inch	Dimensions mm	Description
EKUVT	20.4 x 13.3	518 x 338	Back Panel
DR 316	1.4 x 12.4	35 x 316	DIN-35 Mounting rail
EKUZR	22 x 14.9 x 2	558 x 378 x 50	Extension frame



# ACCESSORIES

Order symbol      Description

## Back Panels (Galvanized steel, sheet thickness 1,5 mm)

EKHVT	5.8 x 5.8 inch ▪ 148 x 148 mm
EKJVT	9.4 x 5.8 inch ▪ 238 x 148 mm
EKMVT	13.3 x 5.8 inch ▪ 338 x 148 mm
EKOVT	9.4 x 9.4 inch ▪ 238 x 238 mm
EKPVT	13.3 x 9.4 inch ▪ 338 x 238 mm
EKTVT	20.4 x 9.4 inch ▪ 518 x 238 mm
EKUVT	20.4 x 13.3 inch ▪ 518 x 338 mm



## DIN-35 Mounting rails (Galvanized steel, rail height 7,5 mm)

EKV 12	1.4 x 6.3 inch ▪ 35 x 160 mm
EKV 22	1.4 x 9.3 inch ▪ 35 x 235 mm
EKV 32	1.4 x 13.2 inch ▪ 35 x 335 mm
EKV 50	1.4 x 19.7 inch ▪ 35 x 500 mm



## Mounting rail accessories

MSM PT 5x10	Mounting screw
MB 10686	Kit of 2 spacers including screws ▪ (15/34 mm)

## DIN rail frames

MS PROF 19	DIN rail frames
MS PROF 28	DIN rail frames
MS PROF 38	DIN rail frames
MS PROF 56	DIN rail frames
EKT PROF 56	DIN rail frames



## Extension frames (Polycarbonate, PUR Gasket)

EKJZR	10.9 x 7.4 x 2 inch ▪ 278 x 188 x 50 mm
EKMZR	14.9 x 7.4 x 2 inch ▪ 378 x 188 x 50 mm
EKOZR	10.9 x 10.9 x 2 inch ▪ 278 x 278 x 50 mm
EKPZR	14.9 x 10.9 x 2 inch ▪ 378 x 278 x 50 mm
EKTZR	22 x 10.9 x 2 inch ▪ 558 x 278 x 50 mm
EKUZR	22 x 14.9 x 2 inch ▪ 558 x 378 x 50 mm



## Hinges and wall mounting

MB 10622	PC Hinge set, 1 pair ▪ incl. screws and drill template
MB 10523	Blind plug for cover corner on hinged side when cover screws are not used
MB 10674	Mounting foot kit (4 pcs) ▪ incl. screws



## Cover screws

HS 10255	Wing head ▪ for 30 mm cover
CS 10256	Cross head ▪ for 30/100 mm cover
SS 10535	Slotted head (sealable) ▪ for 30 mm cover
SS 10544	Slotted head (quick-lock) ▪ for 30/100 mm cover
HS 10533	Wing head (quick-lock) ▪ for 30 mm cover
HS 10532	Quick-locking wing head (hinged) ▪ for 30 mm cover
MB 10534	Threaded bushing ▪ to be ordered separately with quick-lock screws
SS 10563	Cross head ▪ for 80 mm cover
HS 10562	Wing head ▪ for 80 mm cover
DS 10581	Triangle head ▪ for 30/80/100 mm cover
MB 10673 SET	Triangular key ▪ for cover screw DS 10581
SS 10256-4	Set of 4 cross head screws ▪ for 30/100 mm cover
SS 10256-6	Set of 6 cross head screws ▪ for 30/100 mm cover
SS 10563-4	Set of 4 cross head screws ▪ for 80 mm cover



# ACCESSORIES

Order symbol      Description

## Spacers for corners of the base

MR 10726	Spacer 15 mm ▪ M6 self-cutting
MR 10727	Spacer 20 mm ▪ M6 self-cutting
MR 10728	Spacer 30 mm ▪ M6 self-cutting
MR 10729	Spacer 54 mm ▪ M6 self-cutting
HR 10	Extension for MR spacer ▪ 10 mm, M6/M6
HR 15	Extension for MR spacer ▪ 15 mm, M6/M6
HR 20	Extension for MR spacer ▪ 20 mm, M6/M6
HR 30	Extension for MR spacer ▪ 30 mm, M6/M6

## Spacers for middle mounting pods

FA 12053	Spacer 14 mm ▪ M5 self-cutting
FA 12052	Spacer 42 mm ▪ M5 self-cutting

## Key-Lock Set

MB 10597	Lock and two keys ▪ For 30mm covers only
----------	--



## SOLID technical information

Property	Polycarbonate (PC)	ABS
Ingress Protection (EN 60529)	IP 66/IP 67	IP 66/IP 67
Impact Resistance (EN 62262)	IK 08 (side surface) IK 09 (front surface)	IK 08
Temperature Range Celsius (short term)	-40° . . 120°C	-40° . . 80°C
Temperature Range Celsius (continuous)	-40° . . 80°C	-40° . . 60°C
Electrical Insulation	Totally insulated ☐	Totally insulated ☐
Light Gray Parts Color	RAL 7035 Industry Gray	RAL 7035 Industry Gray
Transparent Clear PC Cover	Clear transparent	
Cover Screws	RAL 7035	RAL 7035
Cover Screws	Polyamide (PA)	Polyamide (PA)
Gasket	PUR	PUR
Enclosure Flammability Rating	Complies with UL 508	UL 94HB
Glow Wire Test (IEC 695-2-1) Self-extinguishing (PC)	960°C	650°C
Non-toxicity	Halogen Free	Halogen Free
UV resistance	Complies with UL 508	
Chemical Resistance *	Good	Good

## Conformity to standards

**USA** Enclosures for Electrical Equipment  
PC: UL Type 1, 3, 3S, 4, 4X, 6, 6P and 12; UL File E75645  
ABS: NEMA 1, 3, 3S, 4, 4X, 6, 6P and 12

**Canada** Industrial Control Equipment  
Enclosures for Electrical Equipment/cUL

**Europe** Empty enclosures for low-voltage switchgear and controlgear assemblies EN 62208:2003 (50298:1998)

**Europe** Safety of Information Technology Equipment  
EN 60950  
RoHS directive 2002/95/EC

Russia GostR - Gost Russian certificate of conformity

Data subject to change without notice.

\*Consult separate raw material data for more detailed information