

Fibox CARDMASTER

CARDMASTER enclosures are ideal for packaging instrumentation, measurement, monitoring and process control equipment. The CARDMASTER range features two compartments - one for circuit boards and operator controls and readouts, and another one for terminal and interface wiring.



CARDMASTER



Separate terminal wiring compartment



NEMA 4X compliant



RoHS compliant and halogen-free

CARDMASTER

PC 17/16 L

6.5 x 6.3 NEMA 1, 4X* and 12K
 *PC 17/16L, 17/16 and 21/18: -3 and -FC3 -models

Including: Base, terminal compartment cover with gasket and hardware screws for accessory mounting. -3 and -L3 versions: Transparent cover with PUR gasket, hinges, locking devices; FC version: Opaque screw cover with PUR gasket and cover screws.

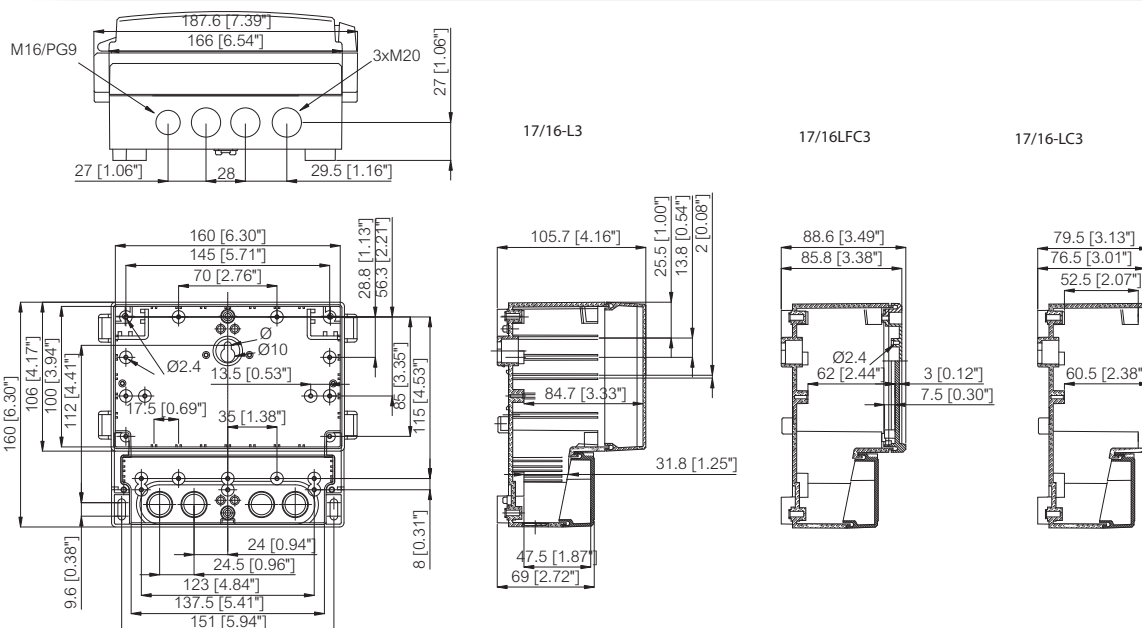


Enclosures

Order symbol	Dimensions inch	Dimensions mm	Description
PC 17/16-L3	7.4 x 6.3 x 4.2	188 x 160 x 106	Smoked transparent hinged cover
PC 17/16-LFC3	6.5 x 6.3 x 3.5	166 x 160 x 89	Opaque screw cover

Accessories

Order symbol	Dimensions inch	Dimensions mm	Description
MP 17/16	5.4 x 5.2	136 x 133	Back Panel
FP 17/16	6.2 x 3.9	158 x 98	Front panel (aluminum)





CARDMASTER PC 17/16

6.5 x 6.3

NEMA 1, 4X* and 12K

*PC 17/16L, 17/16 and 21/18: -3 and -FC3 -models

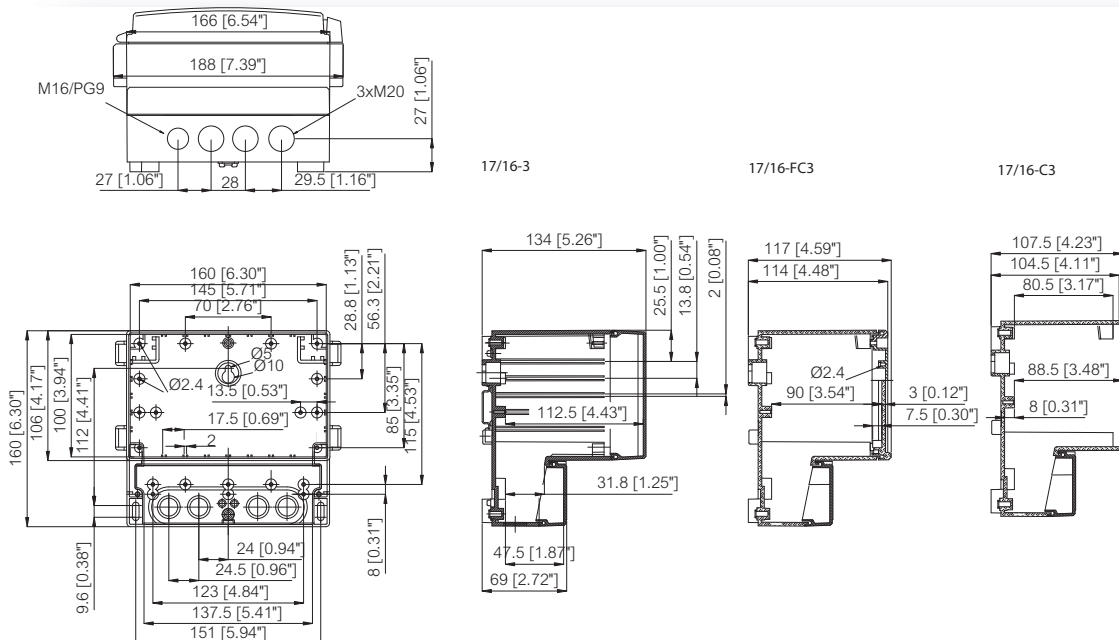
Including: Base, terminal compartment cover with gasket and hardware screws for accessory mounting. -3 and -L3 versions: Transparent cover with PUR gasket, hinges, locking devices; FC version: Opaque screw cover with PUR gasket and cover screws.

Enclosures

Order symbol	Dimensions inch	Dimensions mm	Description
PC 17/16-3	7.4 x 6.3 x 5.3	188 x 160 x 134	Smoked transparent hinged cover
PC 17/16-FC3	6.5 x 6.3 x 4.6	166 x 160 x 118	Opaque screw cover

Accessories

Order symbol	Dimensions inch	Dimensions mm	Description
MP 17/16	5.4 x 5.2	136 x 133	Back Panel
FP 17/16	6.2 x 3.9	158 x 98	Front panel (aluminum)



CARDMASTER

PC 21/18

8.4 x 7.3

NEMA 1, 4X* and 12K

*PC 17/16L, 17/16 and 21/18: -3 and -FC3 -models

Including: Base, terminal compartment cover with gasket and hardware screws for accessory mounting. -3 and -L3 versions: Transparent cover with PUR gasket, hinges, locking devices; FC version: Opaque screw cover with PUR gasket and cover screws.

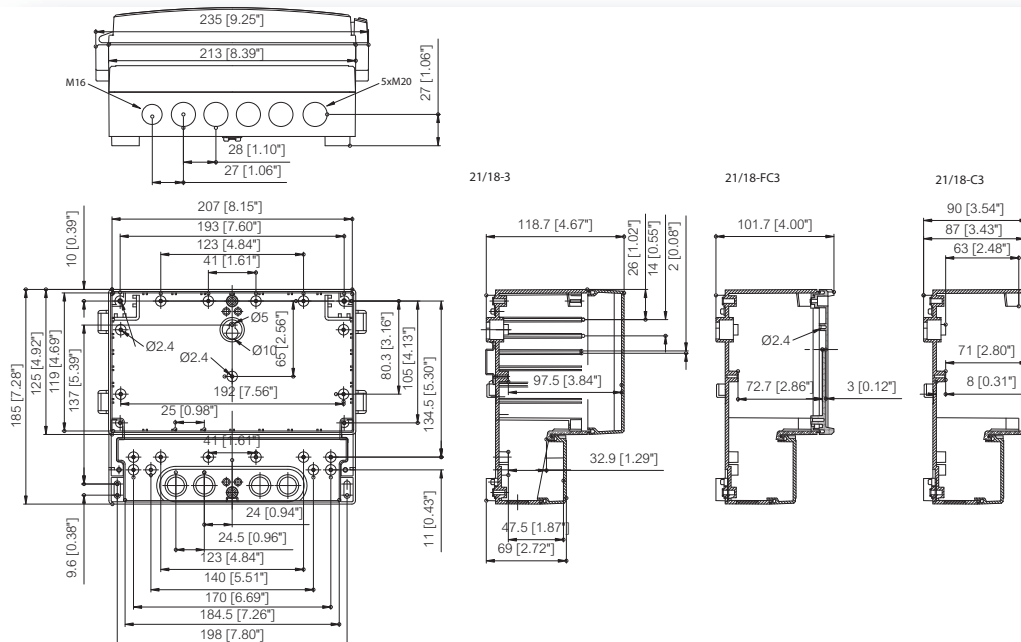


Enclosures

Order symbol	Dimensions inch	Dimensions mm	Description
PC 21/18-3		235 x 185 x 119	Smoked transparent hinged cover
PC 21/18-FC3		213 x 185 x 102	Opaque screw cover
PC 21/18-3 USA		235 x 185 x 119	0.85" knock-outs, AL front panel

Accessories

Order symbol	Dimensions inch	Dimensions mm	Description
MP 21/18	5.6 x 7.9	142 x 200	Back Panel
FP 21/18	8.1 x 4.6	205 x 117	Front panel (aluminum)





CARDMASTER PC 25/22

10.1 x 8.6

NEMA 1, 4X* and 12K

*PC 17/16L, 17/16 and 21/18: -3 and -FC3 -models

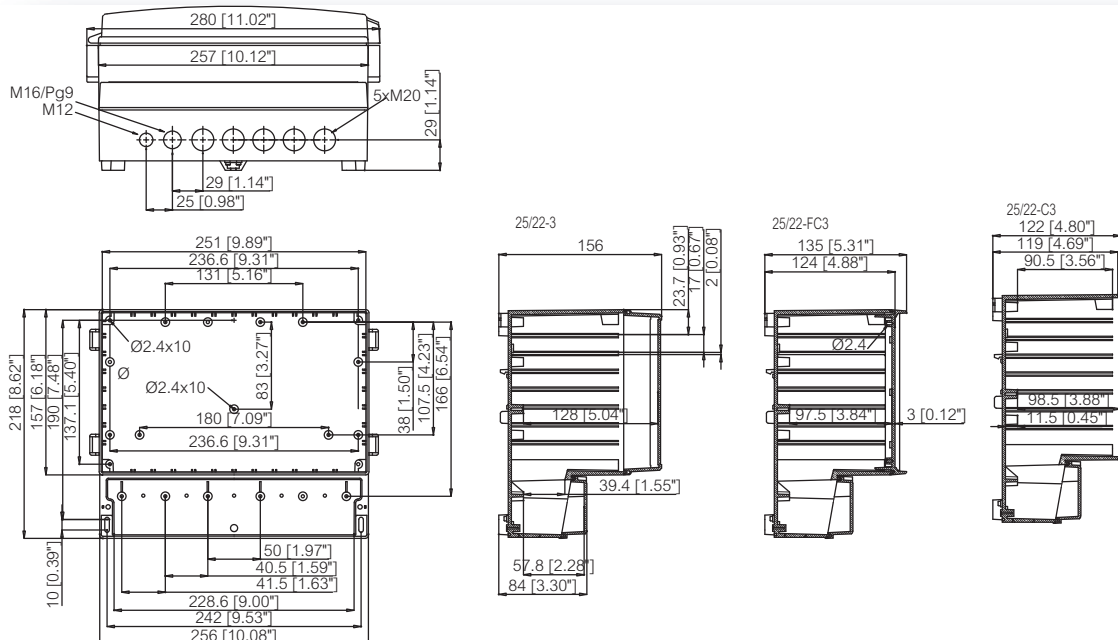
Including: Base, terminal compartment cover with gasket and hardware screws for accessory mounting. -3 and -L3 versions: Transparent cover with PUR gasket, hinges, locking devices; FC version: Opaque screw cover with PUR gasket and cover screws.

Enclosures

Order symbol	Dimensions inch	Dimensions mm	Description
PC 25/22-3 PC 25/22-FC3	11 x 8.6 x 6.1 10.1 x 8.6 x 5.3	280 x 219 x 156 257 x 219 x 135	Smoked transparent hinged cover Opaque screw cover

Accessories

Order symbol	Dimensions inch	Dimensions mm	Description
MP 25/22 FP 25/22	8.9 x 6.9 9.8 x 5.9	225 x 175 250 x 150	Back Panel Front panel (aluminum)



CARDMASTER

PC 30/25

12.6 x 10.2

NEMA 1, 4X* and 12K

*PC 17/16L, 17/16 and 21/18: -3 and -FC3 -models



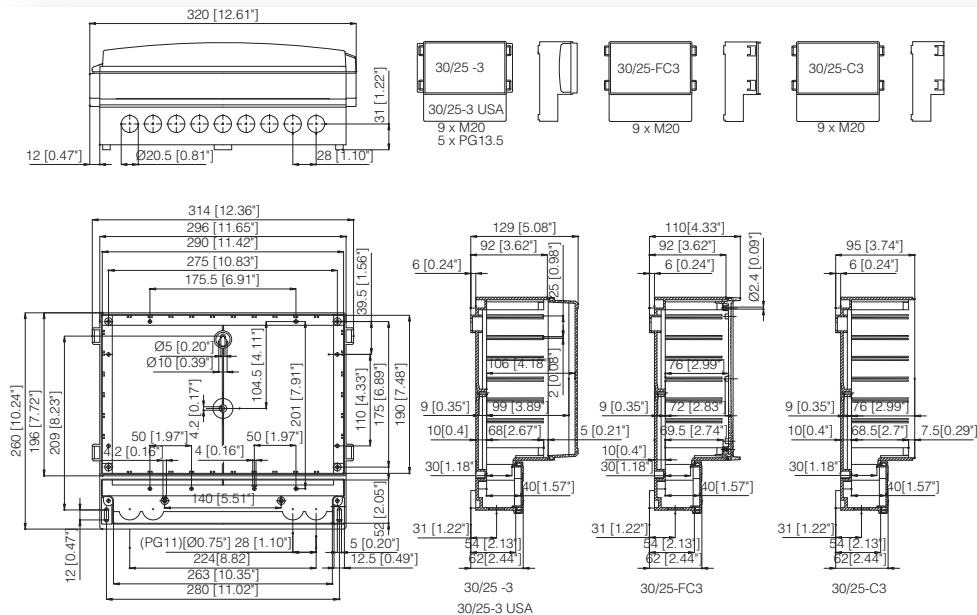
Including: Base, terminal compartment cover with gasket and hardware screws for accessory mounting. -3 and -L3 versions: Transparent cover with PUR gasket, hinges, locking devices; FC version: Opaque screw cover with PUR gasket and cover screws.

Enclosures

Order symbol	Dimensions inch	Dimensions mm	Description
PC 30/25-3	12.6 x 10.2 x 5.1	320 x 260 x 129	Smoked transparent hinged cover
PC 30/25-FC3	12.4 x 10.2 x 4.3	314 x 260 x 110	Opaque screw cover
PC 30/25-3 USA	12.6 x 10.2 x 5.1	320 x 260 x 129	0.85" knock-outs, AL front panel

Accessories

Order symbol	Dimensions inch	Dimensions mm	Description
MP 30/25	11.1 x 8.5	282 x 215	Back Panel
FP 30/25	11.4 x 7.4	289 x 189	Front panel (aluminum)





CARDMASTER

PC 36/31

15.4 x 12.4 NEMA 1, 4X* and 12K
 *PC 17/16L, 17/16 and 21/18: -3 and -FC3 -models

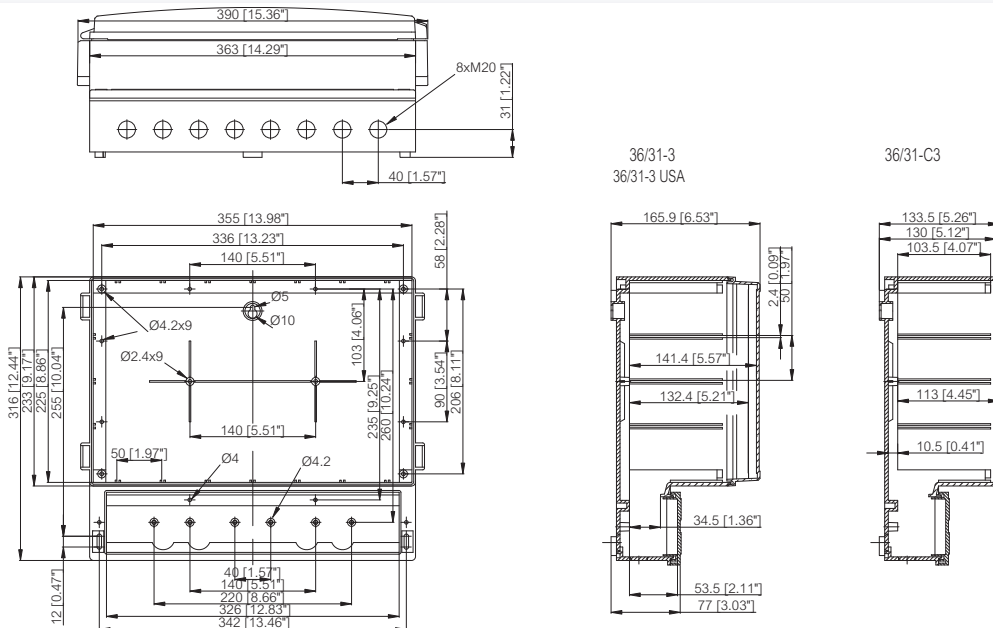
Including: Base, terminal compartment cover with gasket and hardware screws for accessory mounting. -3 and -L3 versions: Transparent cover with PUR gasket, hinges, locking devices; FC version: Opaque screw cover with PUR gasket and cover screws.

Enclosures

Order symbol	Dimensions inch	Dimensions mm	Description
PC 36/31-3	15.4 x 12.4 x 6.6	390 x 316 x 167	Smoked transparent hinged cover
PC 36/31-3 USA	15.4 x 12.4 x 6.6	390 x 316 x 167	0.85"/1.09" knock-outs, AL front panel

Accessories

Order symbol	Dimensions inch	Dimensions mm	Description
MP 36/31	13.6 x 10.2	345 x 258	Back Panel
FP 36/31	13.9 x 8.8	354 x 224	Front panel (aluminum)



ACCESSORIES

Order symbol Description

Back Panels (Galvanized steel, sheet thickness 1,5 mm)

MP 17/16	5.4 x 5.2 inch ▪ 136 x 133 mm
MP 21/18	5.6 x 7.9 inch ▪ 142 x 200 mm
MP 25/22	8.9 x 6.9 inch ▪ 225 x 175 mm
MP 30/25	11.1 x 8.5 inch ▪ 282 x 215 mm
MP 36/31	13.6 x 10.2 inch ▪ 345 x 258 mm

Front panels (Aluminum, sheet thickness 1,5 mm)

FP 17/16	6.2 x 3.9 inch ▪ 158 x 98 mm
FP 21/18	8.1 x 4.6 inch ▪ 205 x 117 mm
FP 25/22	9.8 x 5.9 inch ▪ 250 x 150 mm
FP 30/25	11.4 x 7.4 inch ▪ 289 x 189 mm
FP 36/31	13.9 x 8.8 inch ▪ 354 x 224 mm

Hinges and wall mounting

SET 17/16-21/18-3	Kit of hinges and latches
SET 25/22-3	Kit of hinges and latches
SET 30/25-3	Kit of hinges and latches
SET 36/31-3	Kit of hinges and latches
FP 10674	Mounting foot kit (2 pcs) ▪ incl. screws



CARDMASTER technical information

Property	Polycarbonate (PC)
Ingress Protection (EN 60529)	IP 65
Impact Resistance (EN 62262)	IK 07 (side surface) IK 08 (front surface)
Temperature Range Celsius (short term)	-40° . . .120°C
Temperature Range Celsius (continuous)	-40° . . .80°C
Temperature Range Fahrenheit (short term)	-40° . . .250°F
Temperature Range Fahrenheit (continuous)	-40° . . .175°F
Electrical Insulation	Totally insulated ☐
Light Gray Parts Color	RAL 7035 Industry Gray
Transparent Clear PC Cover	Smoked Gray or clear
Latches (PA)	RAL5023
Gasket	PUR/EPDM
Enclosure Flammability Rating	Complies with UL 508
Glow Wire Test (IEC 695-2-1) Self-extinguishing (PC)	960°C
Non-toxicity	Halogen Free
UV resistance	Complies with UL 508
Chemical Resistance *	Good

Data subject to change without notice.

*Consult separate raw material data for more detailed information

Conformity to standards

USA Enclosures for Electrical Equipment
UL Type 1, 4X* and 12K; UL File E75645
* PC 17/16L, 17/16 and 21/18: -3 and -FC3 models

Canada Industrial Control Equipment
Enclosures for Electrical Equipment/cUL

Europe Empty enclosures for low-voltage switchgear and
Europe Safety of Information Technology Equipment
EN 60950
RoHS directive 2002/95/EC

Russia GostR - Gost Russian certificate of conformity