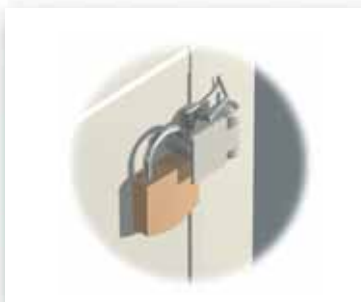


## Fibox CAB

The CAB wall mounting enclosure is a hinged door enclosure featuring both opaque or transparent cover options, and quick release padlockable latches. CAB enclosures are ideal for mounting and housing operator controls and process controllers. Tough, impact resistant polycarbonate withstands harsh and demanding environments.



# CAB



**Padlockable latch**



**Impact resistant design**



**RoHS compliant and halogen-free**

# CAB PC 2030

11.8 x 7.9

UL Type 1, 4, 4X, 12 and 13



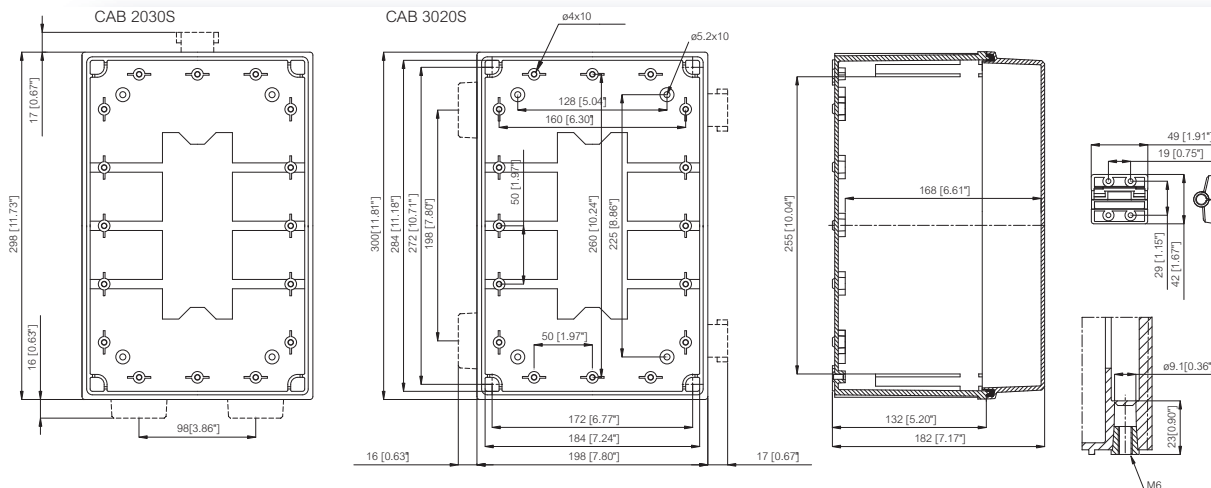
Including: Cabinet base, door with EPDM gasket, latches, hardware screws for accessory mounting and corner plugs. 3B-versions: Cabinet base, door with EPDM gasket, 3mm double bit lock(s) with key, hardware screws for accessory mounting and corner plugs.

## Enclosures

Order symbol	UL Order symbol	Dimensions inch	Dimensions mm	Description
CAB PC 203018 G	UL CAB PC 203018 G	11.8 x 7.9 x 7.1	300 x 200 x 180	Opaque door • Latch short side
CAB PC 302018 G	UL CAB PC 302018 G	11.8 x 7.9 x 7.1	300 x 200 x 180	Opaque door • Latches long side
CAB PC 302018 G3B	UL CAB PC 302018 G3B	11.8 x 7.9 x 7.1	300 x 200 x 180	Opaque door • Lock long side
CAB PC 203018 T	UL CAB PC 203018 T	11.8 x 7.9 x 7.1	300 x 200 x 180	Smoked transparent door • Latch short side
CAB PC 302018 T	UL CAB PC 302018 T	11.8 x 7.9 x 7.1	300 x 200 x 180	Smoked transparent door • Latches long side
CAB PC 302018 T3B	UL CAB PC 302018 T3B	11.8 x 7.9 x 7.1	300 x 200 x 180	Smoked transparent door • Lock long side

## Accessories

Order symbol	Dimensions inch	Dimensions mm	Description
EKIV 23	6.7 x 10.6	170 x 270	Back Panel
EKIV 17	1.4 x 6.5	35 x 166	DIN-35 Mounting rail
EKIV 27	1.4 x 10.5	35 x 266	DIN-35 Mounting rail
FP A 23	6.5 x 10.6	166 x 268	Swing-out door/Front panel (aluminum)
MB 12225 AL			Swing door kit • for aluminum front panels
DRF 23			DIN rail frame kit • incl. a pair of metal profile bar, mounting screws and front panel holders
DRF 33			DIN rail frame kit • incl. a pair of metal profile bar, mounting screws and front panel holders





# CAB PC 3030

11.8 x 11.8

UL Type 1, 4, 4X, 12 and 13

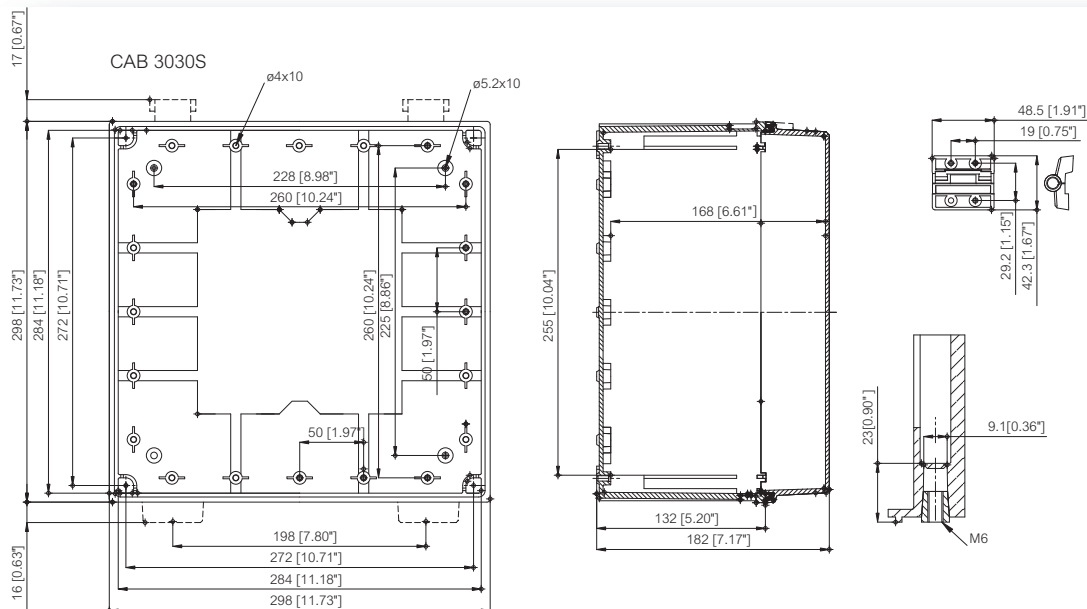
Including: Cabinet base, door with EPDM gasket, latches, hardware screws for accessory mounting and corner plugs. 3B-versions: Cabinet base, door with EPDM gasket, 3mm double bit lock(s) with key, hardware screws for accessory mounting and corner plugs.

## Enclosures

Order symbol	UL Order symbol	Dimensions inch	Dimensions mm	Description
CAB PC 303018 G	UL CAB PC 303018 G	11.8 x 11.8 x 7.1	300 x 300 x 180	Opaque door ▪ Latches long side
CAB PC 303018 G3B	UL CAB PC 303018 G3B	11.8 x 11.8 x 7.1	300 x 300 x 180	Opaque door ▪ Lock long side
CAB PC 303018 T	UL CAB PC 303018 T	11.8 x 11.8 x 7.1	300 x 300 x 180	Smoked transparent door ▪ Latches long side
CAB PC 303018 T3B	UL CAB PC 303018 T3B	11.8 x 11.8 x 7.1	300 x 300 x 180	Smoked transparent door ▪ Lock long side

## Accessories

Order symbol	Dimensions inch	Dimensions mm	Description
EKIV 33	10.6 x 10.6	270 x 270	Back Panel
EKIV 27	1.4 x 10.5	35 x 266	DIN-35 Mounting rail
FP A 33	10.5 x 10.6	266 x 268	Swing-out door/Front panel (aluminum)
MB 12225 AL			Swing door kit ▪ for aluminum front panels
DRF 33			DIN rail frame kit ▪ incl. a pair of metal profile bar, mounting screws and front panel holders



# CAB PC 3040

15.7 x 11.8

UL Type 1, 4, 4X, 12 and 13



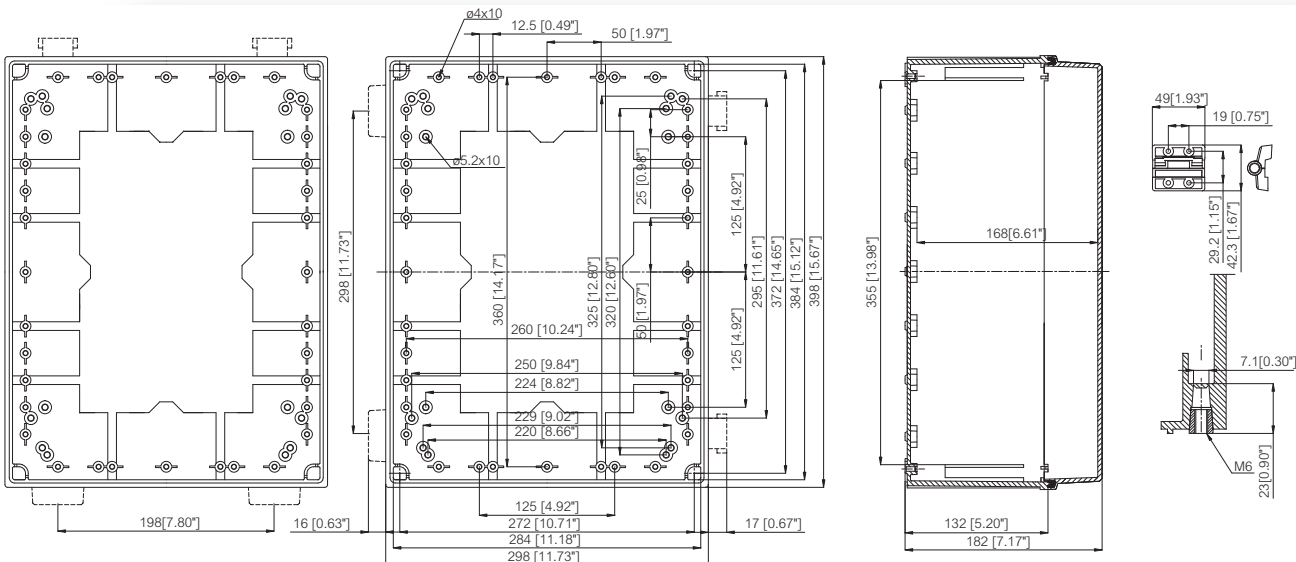
Including: Cabinet base, door with EPDM gasket, latches, hardware screws for accessory mounting and corner plugs. 3B-versions: Cabinet base, door with EPDM gasket, 3mm double bit lock(s) with key, hardware screws for accessory mounting and corner plugs.

## Enclosures

Order symbol	UL Order symbol	Dimensions inch	Dimensions mm	Description
CAB PC 304018 G	UL CAB PC 304018 G	15.7 x 11.8 x 7.1	400 x 300 x 180	Opaque door • Latches short side
CAB PC 403018 G	UL CAB PC 403018 G	15.7 x 11.8 x 7.1	400 x 300 x 180	Opaque door • Latches long side
CAB PC 403018 G3B	UL CAB PC 403018 G3B	15.7 x 11.8 x 7.1	400 x 300 x 180	Opaque door • Locks long side
CAB PC 304018 T	UL CAB PC 304018 T	15.7 x 11.8 x 7.1	400 x 300 x 180	Smoked transparent door • Latches short side
CAB PC 403018 T	UL CAB PC 403018 T	15.7 x 11.8 x 7.1	400 x 300 x 180	Smoked transparent door • Latches long side
CAB PC 403018 T3B	UL CAB PC 403018 T3B	15.7 x 11.8 x 7.1	400 x 300 x 180	Smoked transparent door • Locks long side

## Accessories

Order symbol	Dimensions inch	Dimensions mm	Description
EKIV 43	14.6 x 10.6	370 x 270	Back Panel
EKIV 27	1.4 x 10.5	35 x 266	DIN-35 Mounting rail
EKIV 37	1.4 x 14.4	35 x 366	DIN-35 Mounting rail
FP A 43	10.5 x 14.5	266 x 368	Swing-out door/Front panel (aluminum)
MB 12225 AL			Swing door kit • for aluminum front panels
DRF 43/44			DIN rail frame kit • incl. a pair of metal profile bar, mounting screws and front panel holders





# CAB PC 4050

19.7 x 15.7

UL Type 1, 4, 4X, 12 and 13

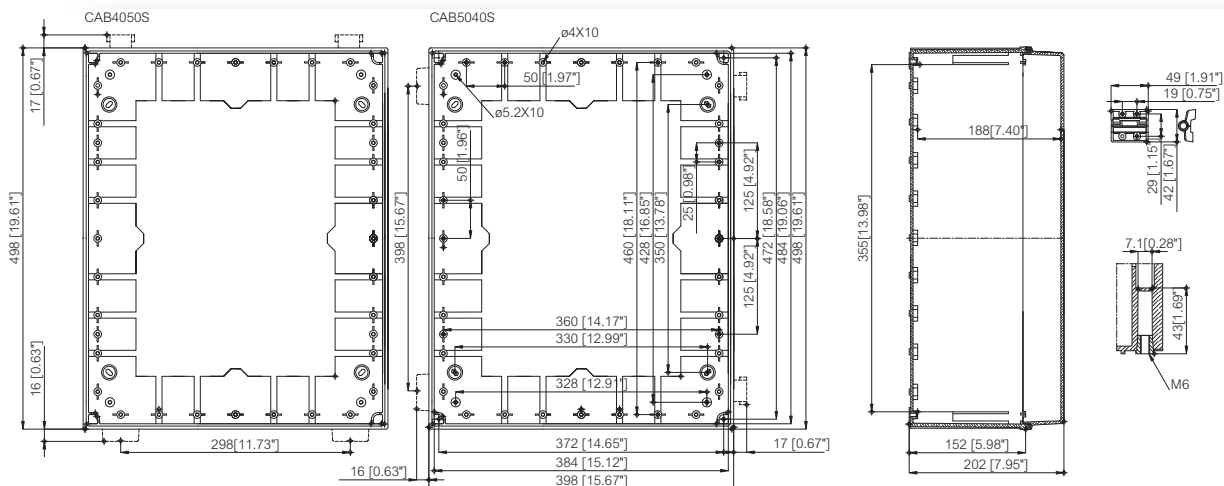
Including: Cabinet base, door with EPDM gasket, latches, hardware screws for accessory mounting and corner plugs. 3B-versions: Cabinet base, door with EPDM gasket, 3mm double bit lock(s) with key, hardware screws for accessory mounting and corner plugs.

## Enclosures

Order symbol	UL Order symbol	Dimensions inch	Dimensions mm	Description
CAB PC 405020 G	UL CAB PC 405020 G	19.7 x 15.7 x 7.9	500 x 400 x 200	Opaque door ▪ Latches short side
CAB PC 504020 G	UL CAB PC 504020 G	19.7 x 15.7 x 7.9	500 x 400 x 200	Opaque door ▪ Latches long side
CAB PC 504020 G3B	UL CAB PC 504020 G3B	19.7 x 15.7 x 7.9	500 x 400 x 200	Opaque door ▪ Locks long side
CAB PC 405020 T	UL CAB PC 405020 T	19.7 x 15.7 x 7.9	500 x 400 x 200	Smoked transparent door ▪ Latches short side
CAB PC 504020 T	UL CAB PC 504020 T	19.7 x 15.7 x 7.9	500 x 400 x 200	Smoked transparent door ▪ Latches long side
CAB PC 504020 T3B	UL CAB PC 504020 T3B	19.7 x 15.7 x 7.9	500 x 400 x 200	Smoked transparent door ▪ Locks long side

## Accessories

Order symbol	Dimensions inch	Dimensions mm	Description
EKIV 54	18.5 x 14.6	470 x 370	Back Panel
EKIV 37	1.4 x 14.4	35 x 366	DIN-35 Mounting rail
EKIV 47	1.4 x 18.3	35 x 466	DIN-35 Mounting rail
FP A 54	18.4 x 14.4	468 x 366	Swing-out door/Front panel (aluminum)
MB 12225 AL			Swing door kit ▪ for aluminum front panels
DRF 54			DIN rail frame kit ▪ incl. a pair of metal profile bar, mounting screws and front panel holders



# CAB PC 6040

23.6 x 15.7

UL Type 1, 4, 4X, 12 and 13



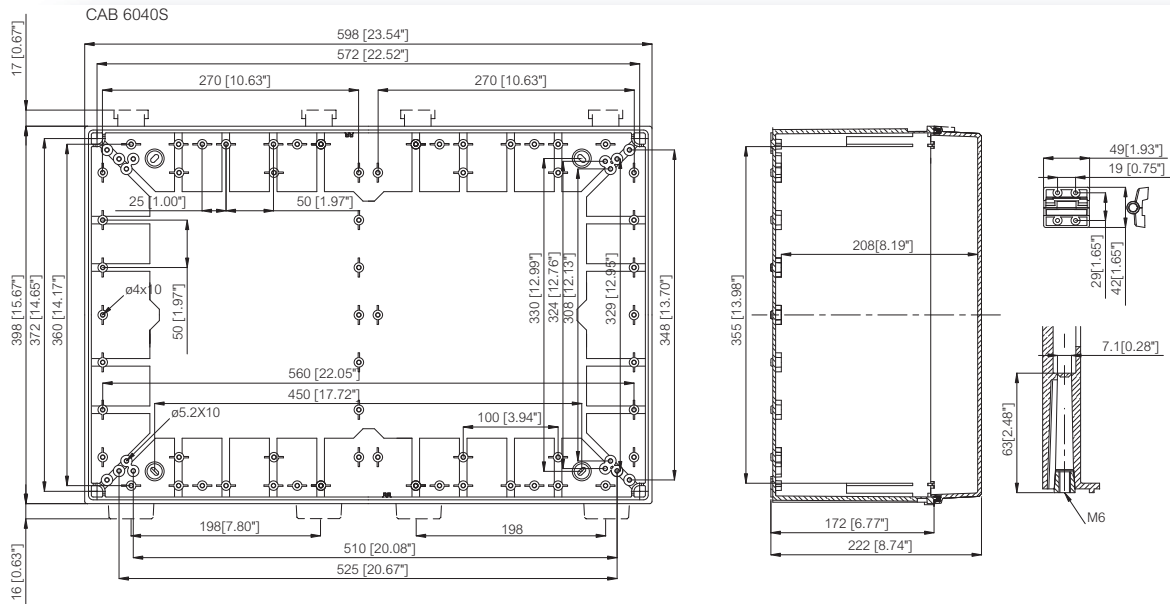
Including: Cabinet base, door with EPDM gasket, latches, hardware screws for accessory mounting and corner plugs. 3B-versions: Cabinet base, door with EPDM gasket, 3mm double bit lock(s) with key, hardware screws for accessory mounting and corner plugs.

## Enclosures

Order symbol	UL Order symbol	Dimensions inch	Dimensions mm	Description
CAB PC 604022 G	UL CAB PC 604022 G	23.6 x 15.7 x 8.7	600 x 400 x 220	Opaque door • Latches long side
CAB PC 604022 G3B	UL CAB PC 604022 G3B	23.6 x 15.7 x 8.7	600 x 400 x 220	Opaque door • Locks long side
CAB PC 604022 T	UL CAB PC 604022 T	23.6 x 15.7 x 8.7	600 x 400 x 220	Smoked transparent door • Latches long side
CAB PC 604022 T3B	UL CAB PC 604022 T3B	23.6 x 15.7 x 8.7	600 x 400 x 220	Smoked transparent door • Locks long side

## Accessories

Order symbol	Dimensions inch	Dimensions mm	Description
EKIV 64H	22.4 x 14.6	570 x 370	Back Panel
EKIV 37	1.4 x 14.4	35 x 366	DIN-35 Mounting rail
FP A 64	22.4 x 14.4	568 x 366	Swing-out door/Front panel (aluminum)
MB 12225 AL			Swing door kit • for aluminum front panels
DRF 63/64			DIN rail frame kit • incl. a pair of metal profile bar, mounting screws and front panel holders



# PC ACCESSORIES

Order symbol      Description

## Back Panels (Galvanized steel, sheet thickness 1,5 mm)

EKIV 15	5.9 x 5.9 inch ▪ 150 x 150 mm
EKIV 23	6.7 x 10.6 inch ▪ 170 x 270 mm
EKIV 33	10.6 x 10.6 inch ▪ 270 x 270 mm
EKIV 43	14.6 x 10.6 inch ▪ 370 x 270 mm
EKIV 54	18.5 x 14.6 inch ▪ 470 x 370 mm
EKIV 64H	22.4 x 14.6 inch ▪ 570 x 370 mm



## DIN-35 Mounting rails (Galvanized steel, rail height 7,5 mm)

TRH 15	1.4 x 4.8 inch ▪ 35 x 122 mm
EKIV 17	1.4 x 6.5 inch ▪ 35 x 166 mm
EKIV 27	1.4 x 10.5 inch ▪ 35 x 266 mm
EKIV 37	1.4 x 14.4 inch ▪ 35 x 366 mm
EKIV 47	1.4 x 18.3 inch ▪ 35 x 466 mm



## Front panels (Aluminum, sheet thickness 1,5 mm)

FP A 23	6.5 x 10.6 inch ▪ 166 x 268 mm
FP A 33	10.5 x 10.6 inch ▪ 266 x 268 mm
FP A 43	10.5 x 14.5 inch ▪ 266 x 368 mm
FP A 54	18.4 x 14.4 inch ▪ 468 x 366 mm
FP A 64	22.4 x 14.4 inch ▪ 568 x 366 mm

## Swing door sets

MB 12225 AL	Swing door kit ▪ for aluminum front panels
-------------	--

## Hinges and wall mounting

MB CH SET	Hinge kit ▪ for CAB/Quick
FP 12017	Mounting foot kit (4 pcs) ▪ incl. screws
SP 12087	Corner plug, red



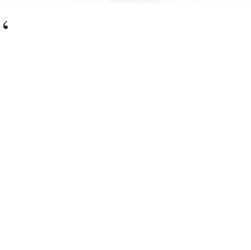
## Pole mounting

PM 60	Pole mount kit ▪ pole diameter min 50 max 70 mm
PM 120	Pole mount kit ▪ pole diameter min 100 max 120 mm



## DIN rail frame sets

DRF 23	DIN rail frame kit ▪ incl. a pair of metal profile bar, mounting screws and front panel holders
DRF 33	DIN rail frame kit ▪ incl. a pair of metal profile bar, mounting screws and front panel holders
DRF 43/44	DIN rail frame kit ▪ incl. a pair of metal profile bar, mounting screws and front panel holders
DRF 54	DIN rail frame kit ▪ incl. a pair of metal profile bar, mounting screws and front panel holders
DRF 63/64	DIN rail frame kit ▪ incl. a pair of metal profile bar, mounting screws and front panel holders



## PC ACCESSORIES

Order symbol	Description
--------------	-------------

### Spacers

FA 12053	Spacer 14 mm ▪ M5 self-cutting
FA 12052	Spacer 42 mm ▪ M5 self-cutting
M5x8	Mounting screw for spacer
MB 10686	Kit of 2 spacers including screws ▪ (15/34 mm)



### Other accessories

MSM PT 5x10	Mounting screw
MB 12235 KEY	Plastic key for the lock

## CAB technical information

Property	Polycarbonate (PC)
----------	--------------------

Ingress Protection (EN 60529)	IP 65
Impact Resistance (EN 62262)	IK 08
Temperature Range Celsius (short term) Fahrenheit	-40° . . .120°C -40° . . .250°F
Temperature Range Celsius (continuous) Fahrenheit	-40° . . .80°C -40° . . .175°F
Electrical Insulation	Totally insulated ☐
Light Gray Parts Color	RAL 7035 Industry Gray
Transparent Clear PC Cover	Smoked Gray
Hinges and Latches (PC)	RAL 7035
Gasket	PUR/EPDM
Enclosure Flammability Rating	Complies with UL 508
Glow Wire Test (IEC 695-2-1) Self -extinguishing (PC)	960°C
Non-toxicity	Halogen Free
UV resistance	Complies with UL 508
Chemical Resistance *	Good

### Confirmity to standards

**USA** Enclosures for Electrical Equipment  
UL Type 1, 4, 4X, 12 and 13; UL File E75645

**Canada** Industrial Control Equipment  
Enclosures for Electrical Equipment/cUL

**Europe** Empty enclosures for low-voltage switchgear and controlgear assemblies EN 62208:2003 (50298:1998)

**Europe** Safety of Information Technology Equipment  
EN 60950  
RoHS directive 2002/95/EC

**Russia** GostR - Gost Russian certificate of conformity

Data subject to change without notice.

\*Consult separate raw material data for more detailed information